



LIFETIME  
LIMITED  
WARRANTY

# A375 UV Air Purifier

## USER MANUAL





# TABLE OF CONTENTS

<b>Air Purifier Safety</b> .....	4
<b>Using Your Air Purifier</b> .....	5
Operating Your Unit	
Identification Of Parts	
<b>Know Your Air Purifier</b> .....	8
<b>Care &amp; Maintenance</b> .....	8
Replacing The Filter	
Why You Should Replace Your Filter	
Alen Replacement Filter Auto Ship Plans	
How To Replace The Filter	
How To Replace The UV Light	
<b>Troubleshooting Tips</b> .....	11
<b>Lifetime Limited Warranty</b> .....	12

## AIR PURIFIER SAFETY

Provided in this manual are important safety messages regarding your electrical home appliance. Always read, follow and save all safety directions.

### Location Requirements

- Use a level surface at least 6" (15.2cm) from heat sources such as ranges or heaters.
- Do not block air vent openings or place air purifier on a soft surface such as a bed or sofa.
- Never insert fingers or foreign objects into air grills or vents.
- Operate indoors only.
  
- **Electrical and Safety Requirements** — Reduce your risk of fire or electrical shock. Failure to follow these instructions can result in death, fire or electrical shock.
- Do not connect unit to any electrical socket that is damaged.
- Ensure filter is correctly installed before turning on unit.
- Always turn off the air purifier when not in use and before unplugging.
- Do not use next to a source of heat, such as a ranger, heater or dryer.
- Do not use near a bath, shower, swimming pool or where a unit can get wet.
- Change your filter on a regular basis, so dust and particles do not build up.
- Do not plug the air purifier into an outlet controlled by a dimmer switch.
- Do not use in a window.
- Unplug air purifier before servicing.
- Do not use an adapter.
- Do not use an extension cord.
- Always unplug the unit before changing the filter.
- Do not cover the unit or impede air flow.
- Do not exceed the rating of the power outlet or connection device. May cause electric shock or fire due to excess heat generation.
- Do not insert or pull out plug with wet hands, it may cause electric shock.
- Never try to take apart or repair the unit by yourself.
- Disconnect the power if strange sounds, smell or smoke comes from it.
- Do not try to change the filter during operation.
- Do not drop the unit, as this can result in damage.
- Do not place heavy objects on the power cord and take care so that the cord is not compressed as there is danger of fire or electric shock.
- Do not climb up or sit on the unit. You may be injured if you fall or if the unit falls over.
- Do not spray insecticides or any other flammable sprays near the machine. It may cause explosion or fire.
- Use only in the proper electrical socket type. Socket type (voltage & hertz) can be found on the product sticker on the side or bottom of the unit. Plugging the unit in to the incorrect socket type can damage/destroy the unit.
- To reduce the risk of electric shock, this equipment has a polarized plug (one blade is wider than the other). This plug will fit in a polarized outlet only one way. If the plug does not fit fully in the outlet, reverse the plug. If it still does not fit, contact qualified personnel to install the proper outlet. Do not alter the plug in any way.



## USING YOUR AIR PURIFIER

### Operating Your Unit:

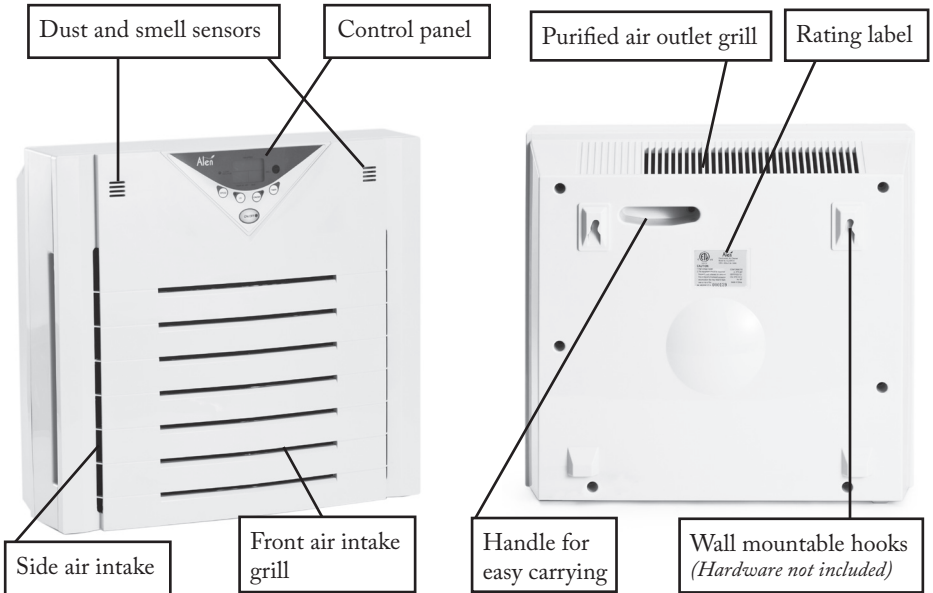
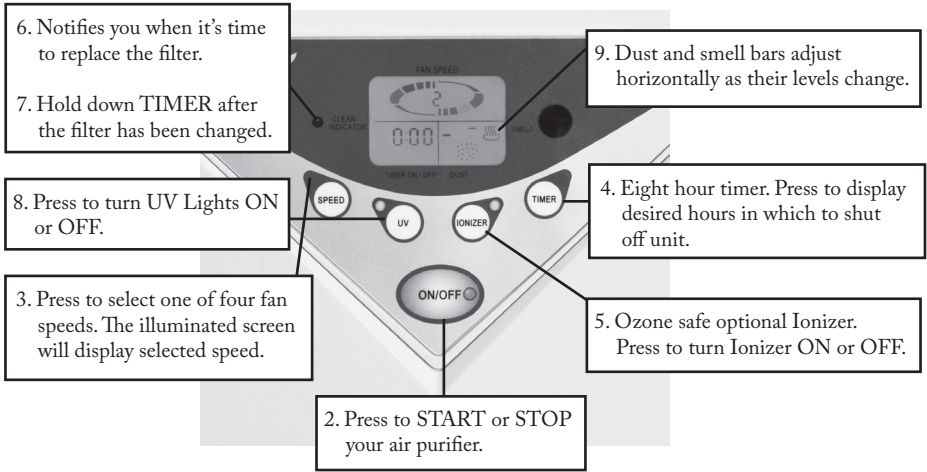
1. Plug your air purifier into a grounded outlet.
2. Press ON/OFF to start the air purifier. When your unit is on the control panel screen will light up. To stop the air purifier press ON/OFF and the indicator light will turn off.
3. Press SPEED and watch the indicator numbers until desired fan speed is achieved.

Fan Speed	Result
Level 1	Quietest operation
Level 2	Basic cleaning power
Level 3	Moderate cleaning power
Level 4	Maximum cleaning power
Auto	AUTO fan speed, the unit will adjust fan speed based on the level of dust or smell. Auto begins on level 1 and if triggered will clean at level 4.

4. Press TIMER to have the air purifier automatically turn off in a set amount of hours. Up to eight hours.
5. Press IONIZER to activate the ozone safe built in ionizer. Activation of IONIZER enhances your unit's ability to remove airborne particles (similar to the way dust is attracted to a TV screen) and keep the air fresh. Press IONIZER again to turn off.
6. Filter replacement indicator — Light bar will progressively illuminate as filter collects particles. There are two green, two yellow and one red bar. Each bar represents approximately one month of continuous operation. Once all five bars are fully illuminated (red being the last), it is time to change the filter.
7. After changing the filter, RESET the filter indicator by holding down TIMER while the unit is ON until the clean indicator light disappears.
8. Press UV to activate the built-in ultraviolet lights. Press UV again to turn off.
9. When on AUTO fan speed, the unit will adjust fan speed based on the level of dust or smell. Dust and smell bars adjust horizontally as their respective levels change.



## Identification Of Parts



### ON/OFF

Press this key to start operation, press it again to stop it.

### FAN SPEED

Every time you press it, the fan speed will vary according to the following order:



### TIMER

Set the operation time. When pressing the key, the timer scale on the panel will indicate the set time:



### SET UP

Used to set the 3 modes. On Time, Off Time and Air Flow in operation. When pressed each time, it will follow the order below:



### UV

Press this key to start UV, press it again to stop it.

### IONIZER

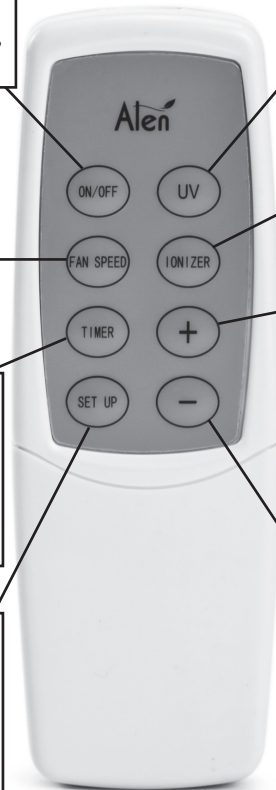
Press this key to turn on the ionizer, press it again to stop it.

### INCREASE

An auxiliary key of the set up key, used to increase operation time and fan speed. Each time it is pressed, the present time will increase by 30 minutes or the fan speed will increase to the next level.

### DECREASE

An auxiliary key of the set up key, used to decrease operation time and fan speed. Each time it is pressed, the present time will decrease by 30 minutes or the fan speed will decrease to the next level.



## KNOW YOUR AIR PURIFIER

When using the air purifier for the first time in a room, many prefer to use a higher fan speed like speed three or four for a couple of hours in order to clean the room's air initially.

### Features

- Photo-Catalytic Oxidation technology. This technology is incorporated with a permanent titanium filter that doesn't need to be replaced.
- Smell and dust sensors. When the fan speed is set to AUTO, these sensors increase or decrease the unit's speed based on the level of odor or dust in the air.
- All in one filter: washable pre-filter with an active layer of carbon and our signature filtration.
- Eight hour timer.
- Remote control.
- Built-in ultraviolet lights (two) can be manually turned on or off.
- Built-in ozone safe ionizer can be manually turned on or off.
- Filter replacement indicator.
- Digital display with simple and intuitive touch button controls.
- Warranty: Lifetime limited warranty, see page 12.
- Wall-mountable to save space or can be placed on the floor.

## CARE & MAINTENANCE

### Replacing The Filter

The filters used in all of Alen air purifiers are not designed to be washed, cleaned or otherwise reused. Please replace filter regularly to maintain optimal high performance. Failure to change your filter on a regular basis will cause dust and particles to build up which can cause the unit to fail.

The black foam layer of the filter, known as the pre-filter, captures large dust and hair. This layer is held on with Velcro®. Once removed, the pre-filter can be washed or vacuumed to maintain efficient operation of the unit.

For optimal performance, it is recommended that the air purifier is left on to run continuously. Under this type of usage, filters will need to be replaced approximately every six months.

### Why You Should Replace Your Filter

- Fulfills the terms of Alen's warranty which states that the filters are required to be changed on a regular basis in order to prevent excessive stress on the unit.
- Energy efficiency — Dirty filters make your unit work harder, increasing energy usage. Replacing your filters on a regular basis increases the performance of your air purifier and reduces your energy consumption.
- You have bought an air purifier in order improve the quality of your indoor air. Changing your filters will maintain the level of air quality you require. Excessively dirty filters can compromise the level of clean air your air purifier can filter.



## Alen Replacement Filter Auto-Ship Plans — Pay Less For More Convenience

Regular replacement of your filter will extend the life of your air purifier and keep your air pure. Alen filters provide efficient filtration for 4 months of heavy usage, 6 months of normal usage and 8 months of moderate usage. With Alen's convenient Auto Ship plan your filters will be shipped for FREE right to your door, exactly when needed.

**SAVE** — Get FREE LIFETIME SHIPPING on all Auto Ship filters.

**CONVENIENCE** — Your filters are delivered right to your door exactly when needed. Choose a 4, 6 or 8 month plan and cancel at anytime.

**LIFETIME LIMITED WARRANTY** — An Alen Auto Ship plan is the convenient way to extend the life of your air purifier and benefit from the lifetime limited warranty.

To sign up and save just visit [AlenCorp.com/filters](http://AlenCorp.com/filters) or call 1-800-630-2396.

## How To Replace The Filter

### Maintenance notes:

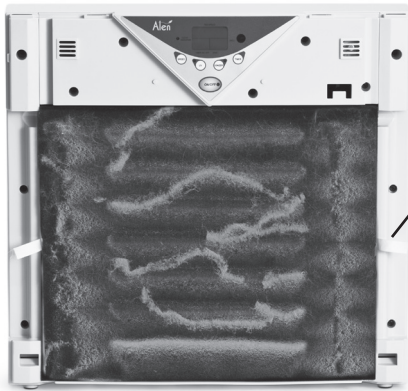
1. Always unplug the unit when installing a filter.
2. Distinguish the front side from the back side of the filter.
3. It is recommended to wear gloves while discarding the used filter. Place the used filter in a plastic bag to prevent dust from reentering the air.



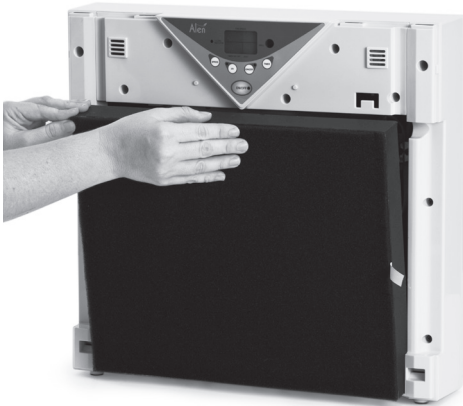
1. With the front of the unit facing up, pull up on the lower left or right corner of the front inlet air intake grill.

2. After pulling up, push the grill towards the display panel at the top of the unit.





3. Remove the used filter by lifting the pull string.



4. Take the new filter out of the plastic bag and insert it into the air cleaner with the arrow pointing inward.

5. Insert the top of the inlet grill first and then snap in the lower part of the grill.



6. **RESET** the filter indicator by holding down **TIMER** while the unit is **ON** until the clean indicator light disappears.

## How To Replace The UV Light

1. Before replacing the UV light, please unplug the unit.
2. With the front of the unit facing up, pull up the lower end of the inlet grill and push it toward the display panel at the top of the unit, then remove it.
3. Remove the filter by lifting the pull string.
4. Unscrew the screws on the lampshade with a screwdriver, and then remove the lampshade.
5. Gently rotate the bulb a quarter turn in either direction until it unlocks from the socket. Pull the pins out of the sides of the socket, one end at a time.
6. Unpack the new UV bulb gently by handling the ends only. Starting with one end of the bulb, then the other, gently insert the metal pins on the bulb into the white slotted socket one pin at a time. Once the ends of the bulb are completely inserted into the socket, rotate the bulb a quarter turn until it locks into place.
7. Reinstall the lampshade.
8. Reinsert the filter.
9. Hook the fasteners on the intake grid into the holes on the unit first, and then push down on the two sides of the inlet grid until the cover snaps into place.

## TROUBLESHOOTING TIPS

### ***How do I reset the filter indicator light? I put in a new filter but the light is still illuminated.***

After changing the filter, RESET the filter indicator by holding down TIMER while the unit is ON until the illuminated clean indicator light disappears.

### ***Can I clean the filter?***

The black foam layer of the filter, known as the pre-filter, captures large dust and hair. This layer is held on with Velcro®. Once removed, the pre-filter can be washed or vacuumed to maintain efficient operation of the unit. No other layers or parts of the filter can be washed, cleaned or otherwise reused. Please replace the filter regularly to maintain optimal high performance.

### ***How can I tell if my UV lights have burnt out?***

Turn on the UV lights by pressing UV and set the fan speed to 1. Make sure the room that the unit is placed in is dark. Look through the top of the unit where the air blows out to see if there is a blue glow. This glow is quite faint, so you may need to press the UV button on/



off several times to see if you notice a difference. If there is no glow, then the UV lights have burnt out and need to be replaced. Visit [www.AlenCorp.com](http://www.AlenCorp.com) or call 1-800-630-2396 to order a replacement UV light. UV lights are like normal light bulbs and will last approximately 9 to 12 months when operated continuously.

***Will the photocatalytic oxidation filter work if the UV lights are turned off?***

No. The interaction of UV-C light and a permanent titanium dioxide (TiO<sub>2</sub>) grid serves as a photo catalyst to carry out hydrolysis (i.e. to break water into hydrogen and oxygen). As TiO<sub>2</sub> is exposed to UV light, it becomes increasingly hydrophilic. Thus, it can be used to reduce concentrations of airborne pollutants such as volatile organic compounds (VOCs) into harmless elements.

***Do I need to replace the photocatalytic oxidation filter?***

No. This filter is permanent and does not need to be replaced. However, the UV lights will need to be replaced as needed.

***I have an issue not listed in this manual.***

Please visit [www.AlenCorp.com](http://www.AlenCorp.com) and send us a message or call 1-800-630-2396. A customer service representative will respond to your inquiry in a timely manner, in most cases within a couple of hours.

***What information do I need when I contact customer service for warranty?***

Please refer to the rating label on the side of the unit. This rating label has your unit's lot code and other important information we need to assist you.

## **LIFETIME LIMITED WARRANTY**

### **What Is Covered?**

Alen offers the industry's first LIFETIME LIMITED WARRANTY program for all our air purifiers. We warrant your Alen air purifier to be free from defects in materials or workmanship for as long as you own it.

### **What Will Alen Do?**

Alen will, at its option, either furnish a replacement part or replace your air purifier provided the product is determined by Alen to be defective as a result of faulty material or workmanship while in normal use. Replacement parts or units will, at Alen's option, be either new or refurbished. Alen's sole obligation under this warranty is to replace defective parts or replace your air purifier free of charge.

### **How To Get Service?**

This warranty will be valid only for units in possession of the original purchaser. Proof of purchase must be presented to Alen's warranty service representative. All parts or units that are replaced become the property of Alen. To obtain warranty service, the defective product or part must be shipped or delivered to Alen's authorized service center. All postage, insurance and shipping charges by you to Alen and from Alen to you are the responsibility of the purchaser and are not included in this warranty. Call 1-800-630-2396 for warranty claim shipping address.



### **Your Lifetime Limited Warranty Program Remains In Effect Only If:**

Your Alen air purifier is operated in accordance with the instructions provided in the Alen user manual. This includes replacing the filter at least once every six (6) months of use to prevent excessive stress on the motor. While you can purchase replacement filters through any authorized dealer, if you are enrolled in any of Alen's replacement filter Auto Ship plans you are considered in compliance with the foregoing requirement. Visit <http://www.alencorp.com/filters> or call 1-800-630-2396 to enroll in Auto Ship.

- Your Alen air purifier is connected to a proper power supply (see voltage label on unit).
- The unit shows no evidence of tampering, mishandling, neglect, accidental damage, modification, and/or repair by anyone other than authorized Alen service personnel.
- Ownership of the air purifier has never been transferred.

### **DISCLAIMERS/LIMITATIONS**

ALEN'S LIFETIME LIMITED WARRANTY IS VALID ONLY FOR THE ORIGINAL PURCHASER AND IS IN LIEU OF ALL OTHER WARRANTIES, EXPRESS OR IMPLIED, INCLUDING WARRANTIES OF MERCHANTABILITY AND FITNESS FOR A PARTICULAR USE OR PURPOSE. ALEN'S SOLE LIABILITY WITH RESPECT TO DEFECTS IN MATERIALS AND WORKMANSHIP IN THE AIR PURIFIER SHALL BE, AT ALEN'S OPTION, TO FURNISH REPLACEMENT(S) OF THE DEFECTIVE PART(S) OR REPLACE THE AIR PURIFIER ON THE BASIS DESCRIBED ABOVE. ALEN WILL NOT INSTALL ANY REPLACEMENT PARTS IT PROVIDES OR PROVIDE LABOR WITH RESPECT TO THE SAME. EXCEPT AS STATED IN THE IMMEDIATELY PRECEDING SENTENCE, ALEN SHALL HAVE NO LIABILITY, WHETHER UNDER A CAUSE OF ACTION IN TORT, STRICT LIABILITY, CONTRACT, OR OTHERWISE, TO ANY PERSON FOR ANY CLAIM, INJURY, LOSS, DAMAGE OR EXPENSE (INCLUDING ANY DIRECT, INDIRECT, SPECIAL, CONSEQUENTIAL, INCIDENTAL, PUNITIVE OR EXEMPLARY DAMAGES) IN ANY WAY ARISING OUT OF OR RELATING TO THE AIR PURIFIER OR ITS USE BY ANY PERSON.

SOME STATES DO NOT ALLOW LIMITATIONS ON AN IMPLIED WARRANTY OR HOW LONG AN IMPLIED WARRANTY LASTS, SO ANY SUCH LIMITATION IN ALEN'S LIFETIME WARRANTY MAY NOT APPLY TO YOU. SOME STATES DO NOT ALLOW THE EXCLUSION OR LIMITATION OF INCIDENTAL OR CONSEQUENTIAL OR OTHER DAMAGES SO ANY SUCH EXCLUSIONS OR LIMITATIONS IN ALEN'S LIFETIME WARRANTY MAY NOT APPLY TO YOU. ALEN'S LIFETIME LIMITED WARRANTY GIVES YOU SPECIFIC LEGAL RIGHTS. YOU MAY ALSO HAVE OTHER RIGHTS WHICH VARY FROM STATE TO STATE.



Copyright © 2011 Alen Corp. All Rights Reserved.  
a375uv-pm-3-2011